

## CITY OF ALAMEDA:

Founded in 1853, the City of Alameda is an island community located in the heart of the San Francisco Bay, just west of Oakland and east of San Francisco. The city has a population of 79,177 and comprises 22.8 square miles.

## ALAMEDA MUNICIPAL POWER:

Alameda Municipal Power (AMP) was founded in 1887 and is the oldest municipal electric utility in California and is among the oldest in the nation, public or private. AMP is governed by an independent Public Utilities Board that was created in 1930 to ensure that the utility would remain under local control and generate a return to the community.

## AMP'S MISSION:

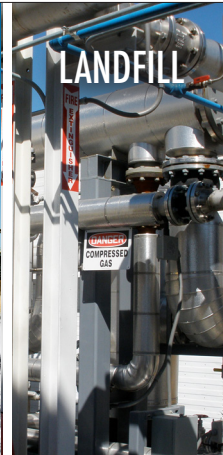
To increase value to Alameda by providing safe, reliable, cost-effective and environmentally responsible electricity.

## KEY FACTS:

- Annual budget: \$64 million
- AA- rating from Standard & Poor in March 2019 and Fitch Ratings in February 2018.
- Awarded American Public Power Association's (APPA) platinum Reliable Public Power Provider (RP3)

## CUSTOMER ACCOUNTS:

- 34,790 total customer accounts
- 30,625 residential accounts
- 4,153 commercial accounts



Alameda Municipal Power will achieve a 100% clean energy portfolio by 2020.

## HIGHLIGHTS

- Comparing AMP's rates to PG&E's, all AMP customers will save about 16%, or \$12 million total, on their utility bills in fiscal year 2020.
- Exceptional reliability record.
- AMP's voluntary renewable energy program earned "top 10" rankings from the National Renewable Energy Laboratory in 2017 and 2018.

## CLEAN AND GREEN FACTS

- Community owned and locally controlled.
- Renewable energy mix with geothermal, hydroelectric, wind and landfill gas.
- Alameda will have 100% clean energy starting in 2020.

## LOCAL FACILITIES

- 178.1 circuit miles of underground distribution lines
- 86.1 pole miles of overhead distribution lines
- 6.8 miles of overhead transmission lines
- 1.9 circuit miles of underground transmission lines

## GENERATION RESOURCES

- Alameda Municipal Power was a leader in the promotion of sustainable and renewable power decades before global warming became a household term.
- AMP easily exceeds California's mandated renewable portfolio requirement of 50 percent by 2030.

**ALAMEDA MUNICIPAL POWER**  
2000 GRAND STREET, ALAMEDA, CA 94501  
[www.alamedamp.com](http://www.alamedamp.com)

# ALAMEDA MUNICIPAL POWER RENEWABLE GENERATION

